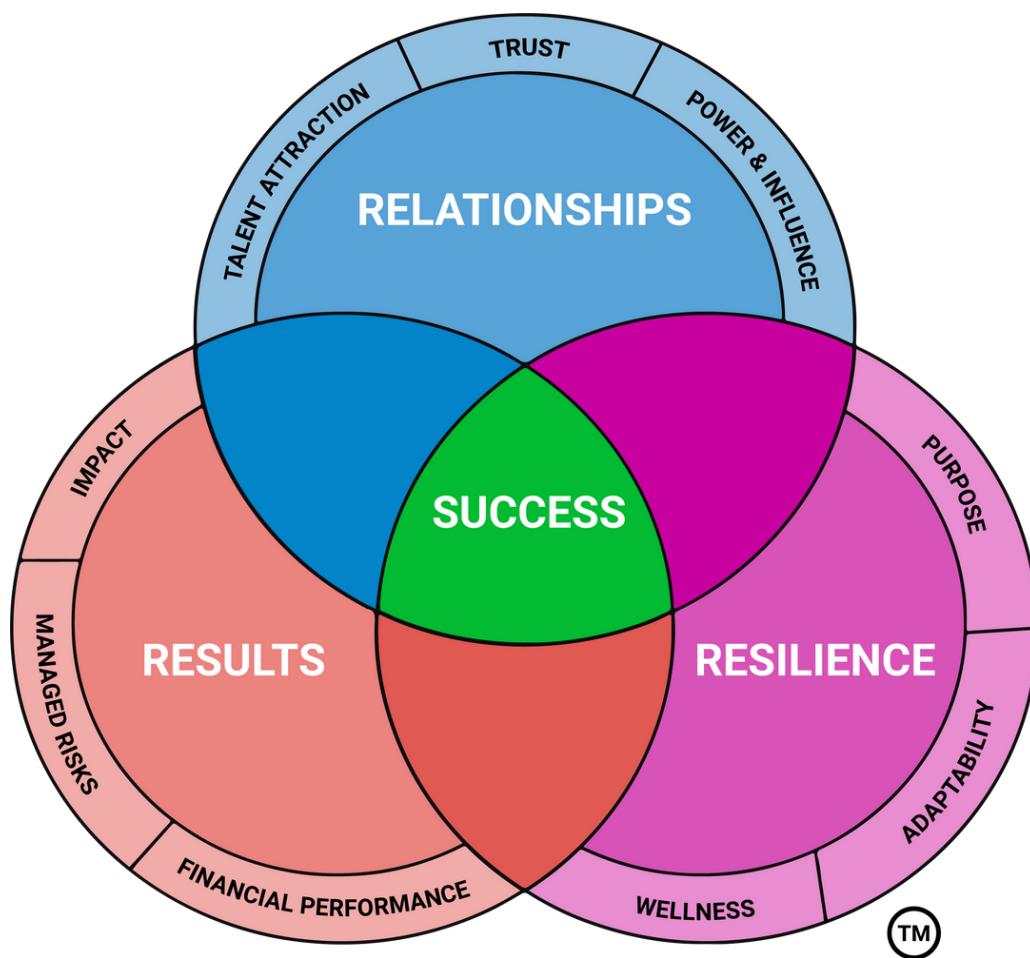


# LEADERSHIP SUCCESS BLUEPRINT

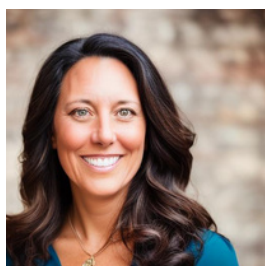
You'll maximize professional success when you build strategic relationships, focus on the most important results and stay adaptable in the face of change.



**RELATIONSHIPS**  
What relationships will help you grow and succeed?

**RESULTS**  
What are the most important results to deliver?

**RESILIENCE**  
What do you need to do or learn to be adaptable in the face of change?



**JENNI CATHCART, CEO LEAD BOLDLY**

Jenni Cathcart is on a mission to help millions of business leaders own their career success -- without compromising their values, health & relationships. Connect with her on LinkedIn for weekly tips.

